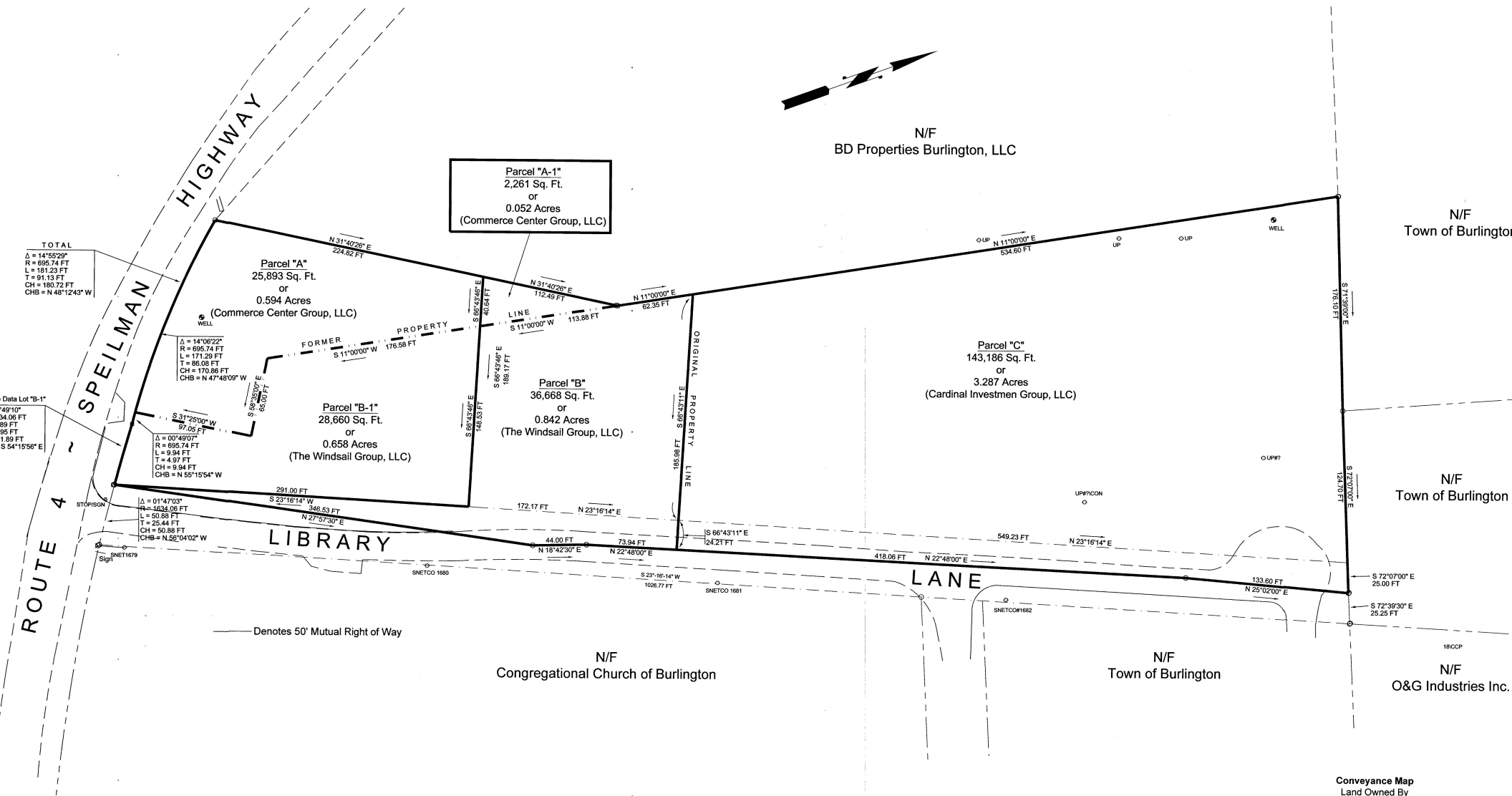


2019-1446



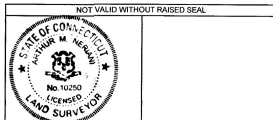
THIS MAP HAS BEEN PREPARED IN ACCORDANCE WITH THE REGULATIONS OF THE BOARD OF LAND SURVEYING, MINIMUM STANDARDS FOR THE STATE OF CONNECTICUT AS ESTABLISHED BY THE CONNECTICUT ASSOCIATION OF LAND SURVEYORS.

SURVEY BASED UPON A DEPENDENT

CLASS A-2

ALL INFORMATION, KNOWLEDGE AND BELIEF IS HEREIN SET FORTH AS TRUTHFULLY CORRECT AS NOTED HEREON.

NERIANI - LAND SURVEYOR
T LS #10250



Original Ink on
Mylar By:
Neriani Surveying

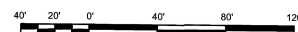
Conveyance Map
Land Owned By
Commerce Center Group, LLC
The Windsail Group, LLC

AND
Cardinal Investment Group, LLC
Route 4 ~ Speilman Highway and Library Lane
Burlington, Connecticut
Scale: 1"=40'
October 11, 2019

Prepared By
Neriani Surveying
35 Old Farms Road - Avon Connecticut
(860) 677-7732

Received and recorded in Burlington, CT
on this 23rd day of Oct., 2019 @ 9:05 am
Attest: Letitia M. Tonnaw
Asst. Town Clerk

Graphic Scale:



DRAWN BY:	CHECKED BY:
AMN	JPM